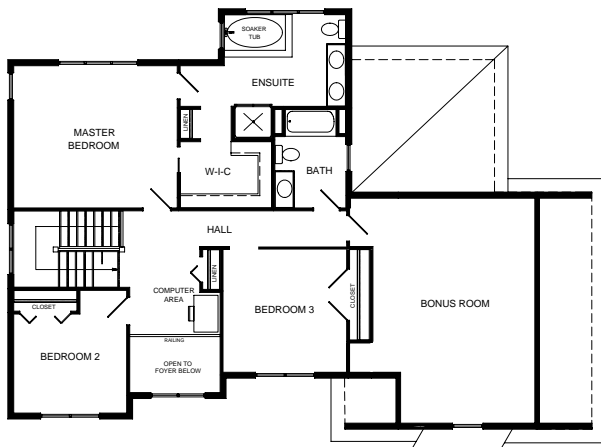




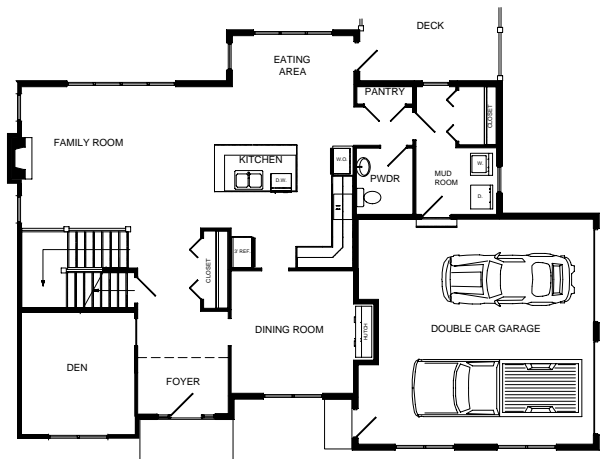
*** SOLD ***

6 Rosemary Rise, St. Philip's (Lot 68)

Spacious three Bedroom two-storey with Bonus Room over Garage for Home Office, Hobby Room, or to make a fourth Bedroom. Great Room with fireplace, Kitchen and Eating Area open to staircase leading to Second Floor and Lower Level. Vaulted Foyer with plenty of natural light and Computer Loft above. Main Floor Den and Formal Dining Room. Ideal Master Suite layout with soaker tub set in corner windows over-looking the Bay, separate shower and double vanity. Custom interior trims and moldings. Hardwood floors and staircase. 9'-0" ceilings. Above grade windows on rear elevation for undeveloped Basement. Side entry double Garage. Premium exterior detailing with Hardi Plank siding and soffits and band-sawn pine corner boards, casings and fascia. Low-E windows by Kohler. Price includes landscaping, finished asphalt driveway, concrete walkway, nursery sod and applicable HST.



Second Floor Plan



Main Floor Plan

Second Floor	1050 sf
Main Floor	1350 sf
Bonus Rm (unfinished)	350 sf
Garage	550 sf
Total Living (Excluding Bonus Rm)	2400 sf

Land
Site Services
Home Construction
HST
Home Price

Paul Fowler
Agent for Remax Specialties
Tel. (709) 687-9408



961 Topsail Road, Mount Pearl, Newfoundland
Tel. (709) 745-7888 Fax (709) 745-7850

